

THEATER FOR THE NEW CITY  
CRYSTAL FIELD  
EXECUTIVE DIRECTOR  
PRESENTS

EVEN  
MORE  
LAUGHS!

BRAND  
NEW  
SONGS!

PARKER  
& DIZZY'S

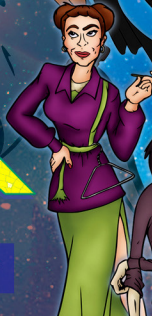
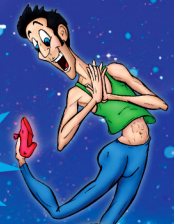
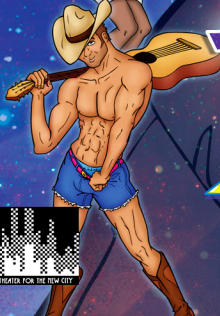
FABULOUS  
JOURNEY

TO THE END OF THE

RAINBOW

THE MUSICAL

[www.theaterforthenewcity.net](http://www.theaterforthenewcity.net) [www.parkeranddizzy.com](http://www.parkeranddizzy.com)



"I am happy to report that Parker & Dizzy—a warped re-imagining of The Wizard of Oz, with detours into Star Wars, Thelma & Louise, Ghost, and a hundred other pop-culture landmarks—is a joyous, loopy romp—precisely the kind of show you dream of discovering at FringeNYC."  
- David Kennerly, **GayCity**

**THEATER FOR THE NEW CITY**  
**CRYSTAL FIELD**  
EXECUTIVE DIRECTOR  
PRESENTS

**PARKER & DIZZY'S**  
**FABULOUS**  
**JOURNEY**  
TO THE END OF THE  
**RAINBOW**  
THE MUSICAL

"Be warned. The humor is campier than an episode of "RuPaul's Drag Race" with rapid-fire vaudevillian one-liners and well-crafted, but broad musical numbers... I can honestly say that Parker & Dizzy's acting and production values were better than the last Broadway show I saw."  
- Chris Thomas, **Out-FM**

BOOK BY **PETER ZACHARI** MUSIC & LYRICS BY **DAMON MAIDA & PETER ZACHARI**

DIRECTED BY **PETER ZACHARI** MUSICAL DIRECTION BY **DOUGLAS MAXWELL** CHOREOGRAPHY BY **JOEY MIRABILE**

FEATURING PERFORMANCES BY  
**ERIC BYRER, MARTI GOULD CUMMINGS, KASIDY DEVLIN, SAM GIVEN\*, SOLOMON KEE,  
JOEY MIRABILE, SCOTT MICHAEL SALAME, JACOB M. STORMS AND PETER ZACHARI\***

STAGE MANAGER: **ANDREW SLATER\***

\*APPEAR COURTESY OF ACTORS' EQUITY ASSOCIATION EQUITY APPROVED SHOWCASE

**TICKETS:**  
\$15 GENERAL ADMISSION  
\$10 STUDENTS & SENIORS  
VISIT **THEATERFORTHENEWCITY.NET**  
OR CALL (212) 254-1109

**THEATER FOR THE NEW CITY**  
155 1<sup>ST</sup> AVENUE, NEW YORK, NY 10003  
**JANUARY 9 - 26, 2014**  
THURSDAYS, FRIDAYS & SATURDAYS @ 8:00PM  
SUNDAYS @ 3:00PM

**WWW.PARKERANDDIZZY.COM**  
FIND US ON **facebook** & **twitter**!

This production was presented by THE NEW YORK INTERNATIONAL FRINGE FESTIVAL, a production of THE PRESENT COMPANY.



This production is funded in part by the DCA and NYSCA.

